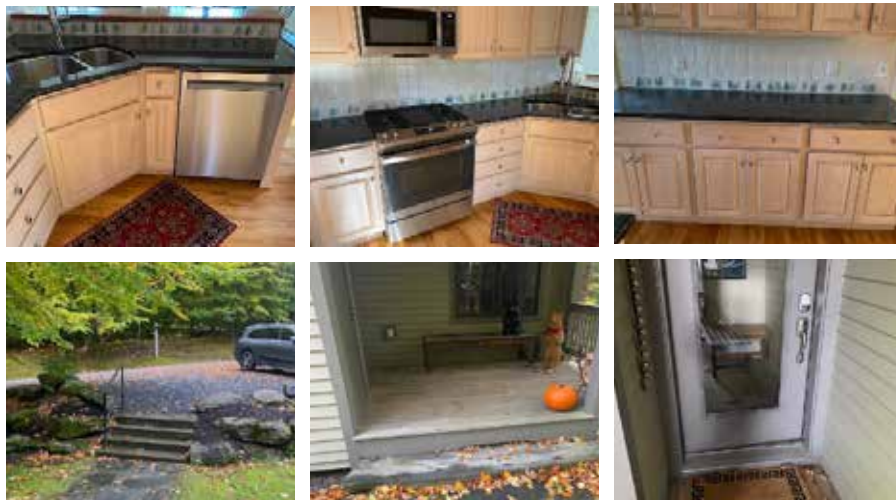


REMOVAL AND DISPOSAL



The date for your removal will be scheduled 1-2 days prior to your template appointment. To ensure smooth coordination for the removal appointment, we kindly request photos of your existing tops. We need you to provide a location as to where we will be leaving them onsite (if the disposal is not included). Also, include photos of access in and out of the home. These photos will assist us in determining the appropriate number of field crew members to send on the day of removal. If the photos are not received within one week of the scheduled removal appointment, we may need to reschedule for proper planning. Thank you for your cooperation in advance.

Sample photos



VANITY PRICING <15 sq. ft.

Travel fee applied based on location.

Removal and Disposal

Granite/Stone/Quartz

Laminate/Solid Surface

Tile or Custom/Other

KITCHEN >15 sq. ft.

Travel fee applied based on location.

Removal and Disposal

Granite/Stone/Quartz

Laminate/Solid Surface

Tile or Custom/Other

REQUIREMENTS

You will be required to complete the following prior to our arrival, please confirm this will be taken care of:

- Clear existing tops.
- Remove all drawers.
- Disconnect all plumbing from sinks and existing counters.
- Disconnect all downdrafts and cooktops and remove them.
- Move appliances (stoves, fridges) out of the way if needed.